

TRUCKSEAL M/L



APLICAȚII

• Posta • Curierat • Aparate de control •
Containere • Vagoane • Camioane

MATERIAL

• Polietilena HD •
Sistem de inchidere din metal

CARACTERISTICI

• Lungime operationala: 200 mm (Truckseal M) | 300mm (Truckseal L) • Grosime: 2 mm • Aria marcare: 50x20 mm • Autoblocant

MARCAJE

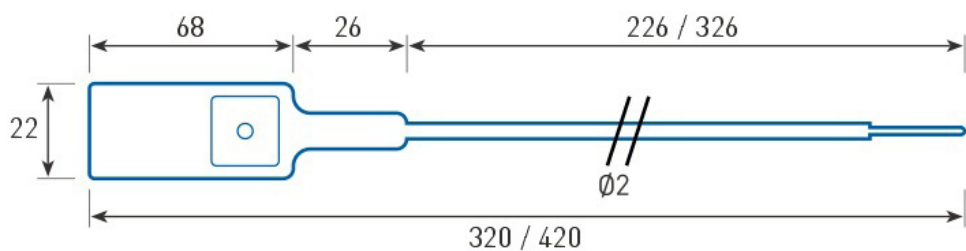
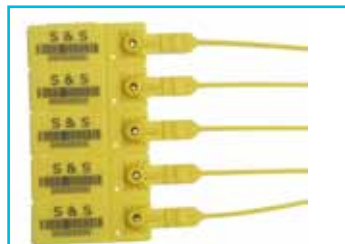
• Text (max 8 caractere pe rand) • Serie (max 9 cifre)

CULORI

• Alb • Albastru • Galben

AMBALARE

• 1000 bucati/cutie •
Dimensiuni: 360x490x320mm •
Greutate: 2.5kg



All dimensions in mm.