

ALDLOCK DUO



APLICAȚII

- Containere • Incinte • Camioane • Rezervoare • Vagoane

MATERIAL

- Corp de aluminiu; • Cablu de oțel 1.8 mm; • Sistem de închidere din zamak.

CARACTERISTICI

- Agrement tehnic AFER • Autoblocant • Se utilizează scule pentru îndepărtare • Lungime cablu 500 mm standard • 2 sisteme de blocare

MARCAJE

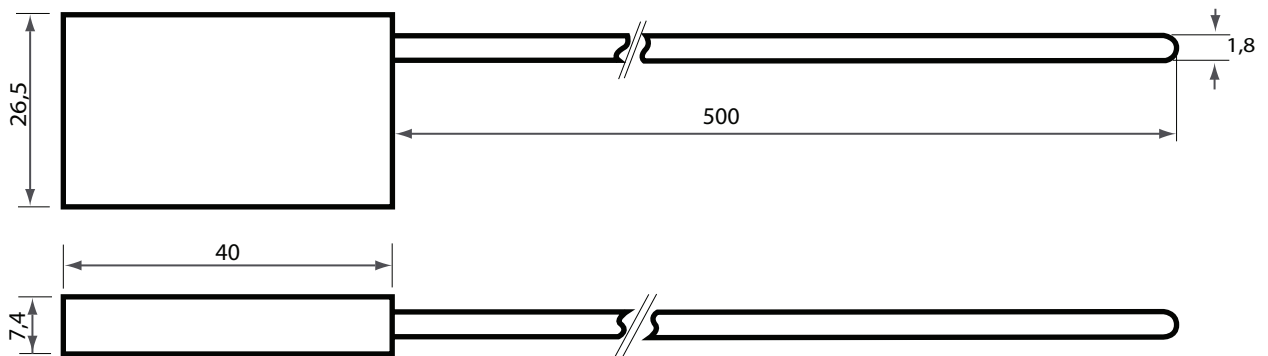
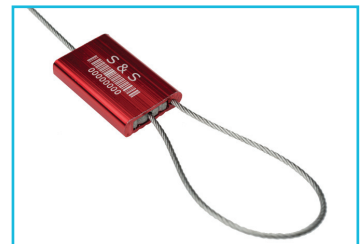
- Logo • Text • Serie • Cod de bare

CULORI

- Albastru • Rosu • Negru • Verde

AMBALARE

- 500 piese / cutie • Dimensiuni: 400 x 200 x 150 mm • Greutate: 9 Kg



ALDLOCK P



APLICAȚII

- Containere • Incinte • Camioane • Rezervoare • Vagoane

MATERIAL

- Corp de ABS • Sistem de inchidere din zamak • Cablu de otel galvanizat de 1,8 mm, cu un singur sistem de blocare

CARACTERISTICI

- Agrement tehnic AFER • Autoblocant • Se utilizeaza scule pentru indepartare • Lungime cablu 260 mm standard

MARCAJE

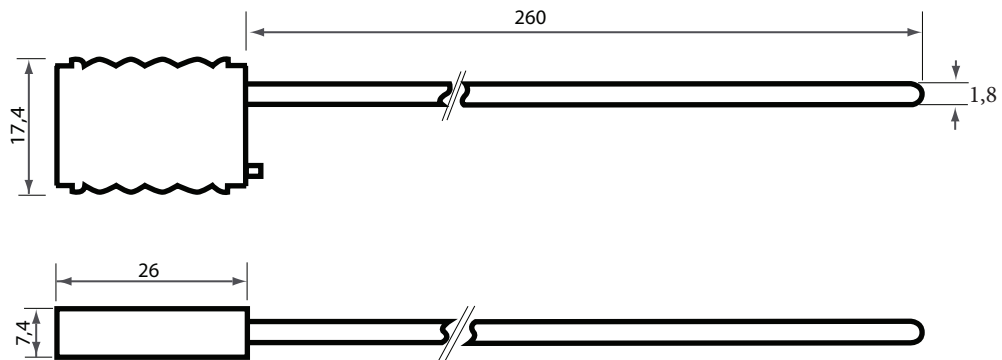
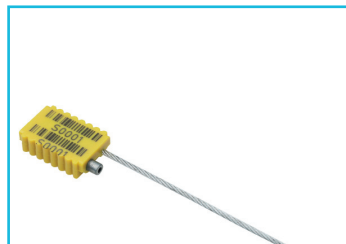
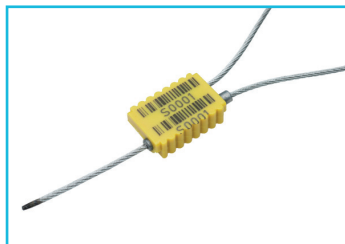
- Logo • Text • Serie • Cod de bare

CULORI

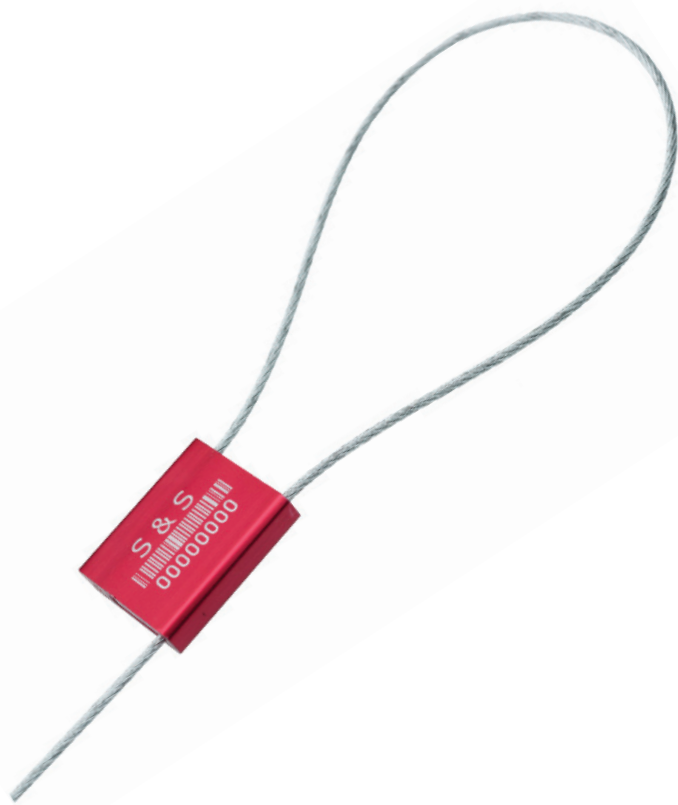
- Alb • Galben

AMBALARE

- 500 piese / cutie • Dimensiuni: 400 x 200 x 150 mm



ALDLOCK MINI



APLICAȚII

• Containere • Incinte • Camioane •
Rezervoare • Vagoane

MATERIAL

• Corp de aluminiu • Cablu de oțel 1,8 mm
• Sistem de închidere din zamak

CARACTERISTICI

• Acord tehnic AFER • Autoblocant •
Se utilizează scule pentru îndepărtare •
Lungime cablu 500 mm standard

MARCAJE

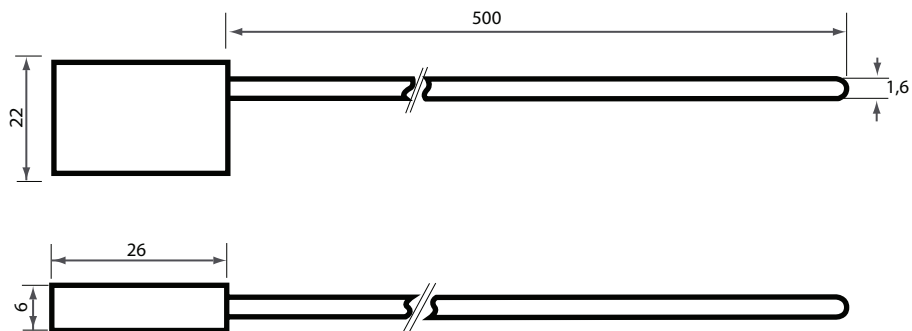
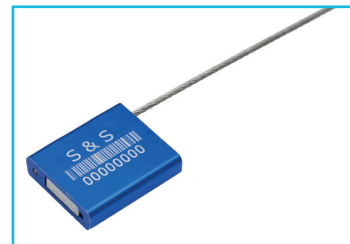
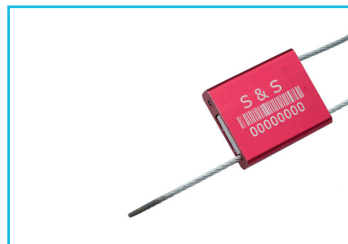
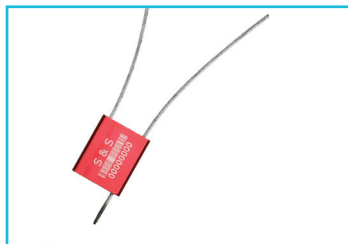
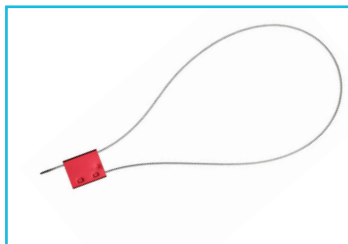
• Text • Serie • Cod de bare

CULORI

• Galben • Rosu • Albastru

AMBALARE

• 1000 piese/ cutie •
Dimensiuni: 400 x 200 x 150 mm •
Greutate: 9 Kg



INNERFORCE



APLICAȚII

- Containere • Incinte • Camioane • Rezervoare • Vagoane

MATERIAL

- Corp ABS • Sistem de inchidere din zamak • Cablu de oțel galvanizat de 1,8 mm

CARACTERISTICI

- Cablu de oțel de 500 mm • Corp de plastic și 2 sisteme de inchidere • Autoblocant • Desigilare prin taiere

MARCAJE

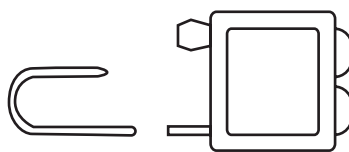
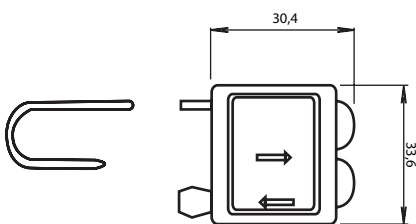
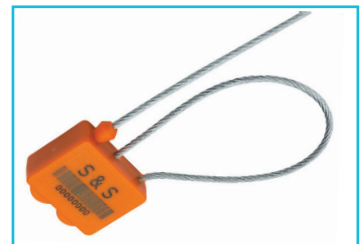
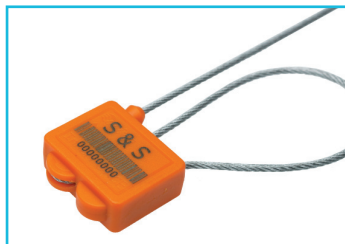
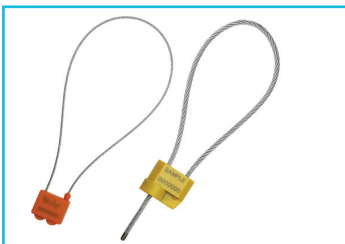
- Logo • Text • Serie • Cod de bare

CULORI

- Portocaliu • Galben • Albastru

AMBALARE

- 10 piese / cutie • Greutate: 9 Kg



GARDA SEAL



APLICAȚII

- Containere • Incinte • Camioane • Rezervoare • Vagoane

MATERIAL

- Corp de plastic • Cablu de oțel 1.6 mm

CARACTERISTICI

- Autoblocant • Lungimea standard a cablului 350 mm • Zona de marcare mare
- Desigilare prin taiere

MARCAJE

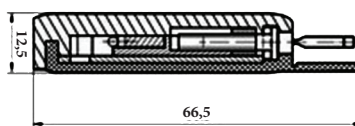
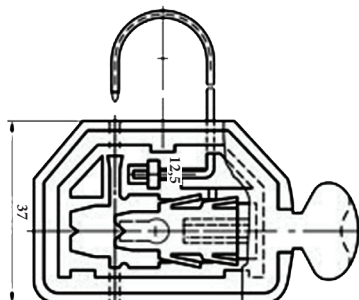
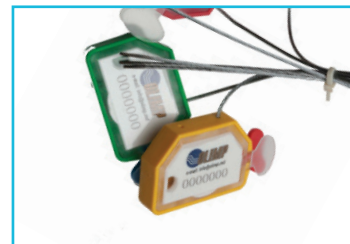
- Logo • Text • Serie • Cod de bare

CULORI

- Albastru • Rosu • Alb • Galben • Verde

AMBALARE

- 1000 bucati/cutie



BANJO SEAL



APLICAȚII

- Containere • Incinte • Camioane • Rezervoare • Vagoane • Cisterne

MATERIAL

- Banda cositorita

CARACTERISTICI

- UK Custom Grupa 3 / tranzit comunitar • Construcție monobloc • Sigiliul se va rupe prin îndoiri repetate în zona gaurilor de verificare sau prin tăiere

MARCAJE

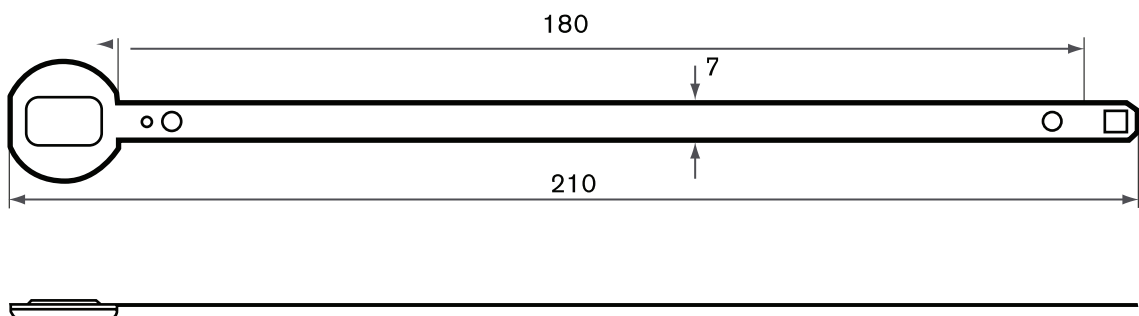
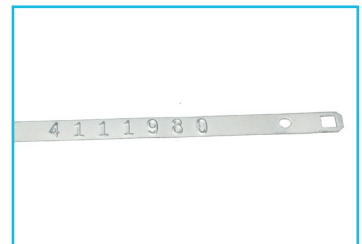
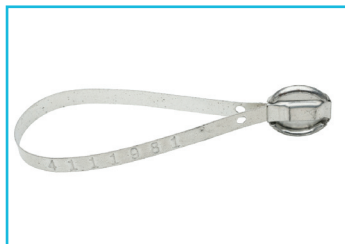
- Text • Serie

CULORI

- Metal

AMBALARE

- 1000 piese/cutie



GUARDLOCK



APLICAȚII

- Containere • Incinte • Camioane • Rezervoare • Vagoane • Cisterne

MATERIAL

- Banda cositorita

CARACTERISTICI

- Tranzit comunitar • Construcție monobloc • Sigiliul se va rupe prin indoiri repetate în zona gaurilor de verificare sau prin tăiere

MARCAJE

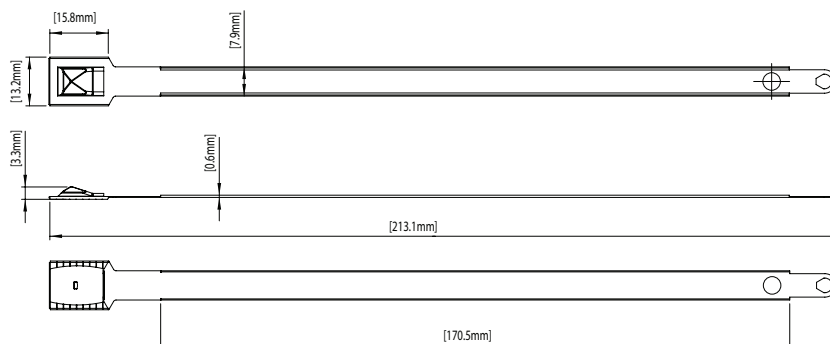
- Text • Serie

CULORI

- Metal

AMBALARE

- 1000 piese/cutie



T-SEAL



APLICAȚII

- Containere • Incinte • Camioane • Rezervoare • Vagoane • Cisterne

MATERIAL

- Banda cositorita • Cap plastic

CARACTERISTICI

- Reglementare EU 2454/93, Articolul 386, Anexa 46A • ISO/PAS 17712 • Latime : 10 mm • Rezistenta la rupere: 15.5 KN • Lungime totala: 100 - 650 mm (standard 180 mm) • Se utilizeaza scule pentru taiere • Dimensiune coada: 64 x 26 mm • Usor de inchis (fara scule ajutatoare)

MARCAJE

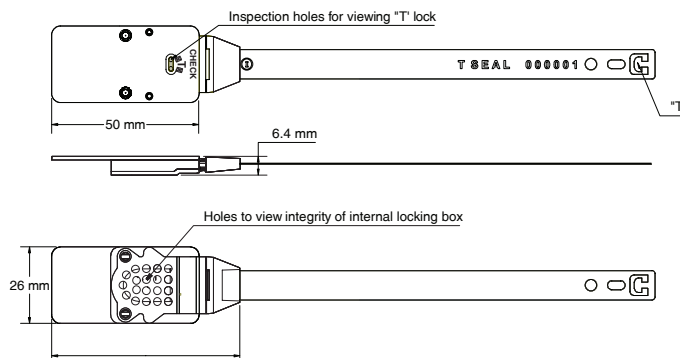
- Text • Serie de maxim 6 cifre • Logo • Cod de bare

CULORI

- Galben

AMBALARE

- 1000 piese/cutie • Dimensiuni: 420 x 280 x 23.4 mm • Greutate: 11.2kg



CLIPSEAL



APLICAȚII

• Probe • Incinte • Recipienti • Rezervoare

MATERIAL

• Banda cositorita

CARACTERISTICI

• Autoblocant • Se utilizeaza impreuna cu sfoara sau sarma subtire de sigilat

MARCAJE

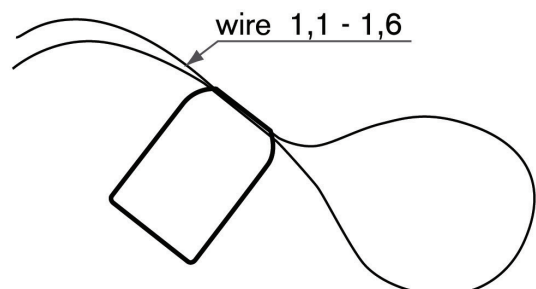
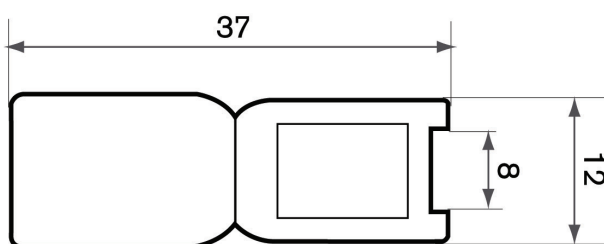
• Standard inseriat •
Optional personalizare 3 caractere

CULORI

• Metal

AMBALARE

• 1000 bucati/ cutie sau 200 bucati/ cutie



TITAN SEAL



APLICAȚII

• Containere • Incinte • Camioane •
Rezervoare • Vagoane

MATERIAL

• Corp de ABS • Cablu galvanizat flexibil •
Sistem de inchidere din zamak

CARACTERISTICI

• ISO PAS 17712 - sigiliu de inalta securitate
• autoblocant • se utilizeaza scule pen-
tru indepartare • lungime cablu 500mm
standard • Corpul protector este produs
din material antisoc ABS • Cablu galvanizat
flexibil cu diametrul 5,2 mm si lungime
standard 500 mm • Forta de rupere a
cablului - 20 kN • Dimensiuni: 37x46x28
mm • Greutatea la lungimea standard a
cablului - 140 gr • Mecanismul de blocare
excluce posibilitatea miscarii in sens invers
a cablului la finisarea instalarii

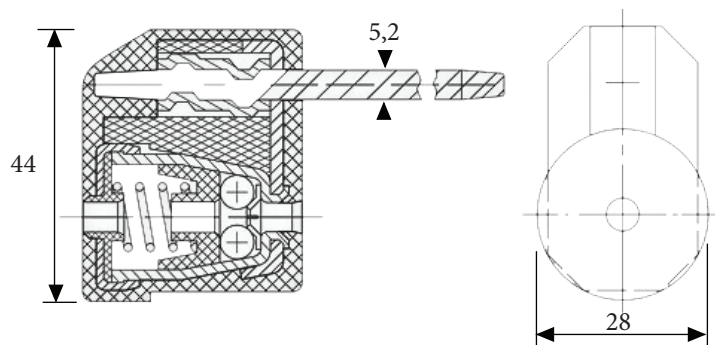
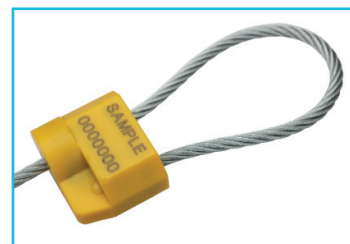
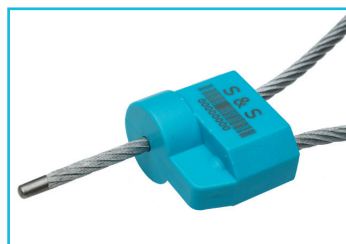
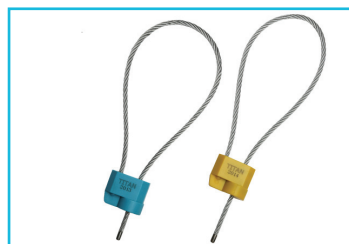
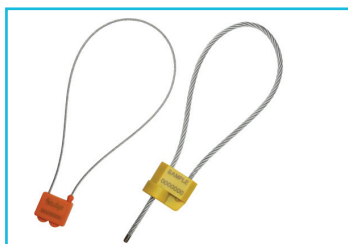
MARCAJE

• Suprafata disponibila pentru marcare:
24x27 mm • Cod de bare • Logo • Text •
Serie • Cod de bare

CULORI

• Albastru • Galben • Portocaliu

AMBALARE



BOLTSEAL



APLICAȚII

• Containere • Incinte • Camioane • Transport maritim.

MATERIAL

• Otel carbon • ABS • Polipropilena

CARACTERISTICI

• ISO/PAS 17712 • Diametru : 10,5 mm • Rezistența la rupere: 15.5 KN • Antirotatie • Se utilizează scule pentru tăiere • Usor de închis (fără scule ajutatoare)

MARCAJE

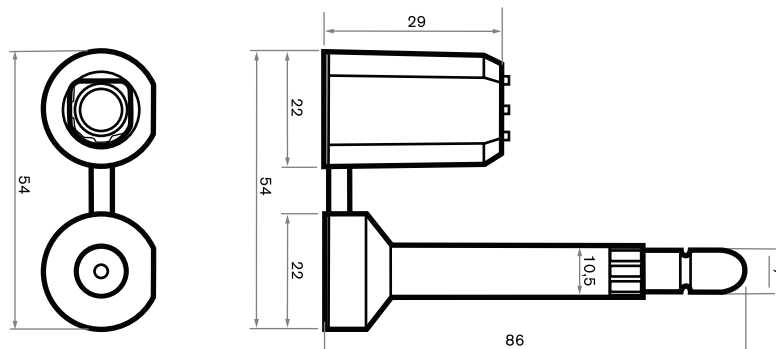
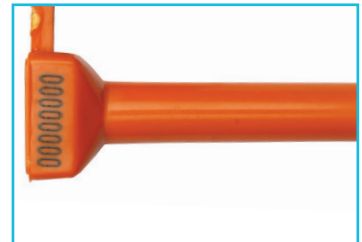
• Logo • Text • Serie • Serie din 8 cifre maxim • Cod de bare disponibil la cerere

CULORI

• Albastru • Alb • Galben • Portocaliu

AMBALARE

• 200 bucati/cutie • Dimensiuni: 375 x 235 x 235 mm • Greutate: 12 kg



BALON SEAL



APLICAȚII

Containere • Incinte • Camioane •
Rezervoare • Vagoane

MATERIAL

Banda cositorita • Inele inchidere din otel

CARACTERISTICI

ISO/PAS 17712 - sigiliu de securitate •
Sistem de inchidere prin doua inele de otel
independente •
Se utilizeaza scule pentru indepartare •
Coda vizibila arata ca sigiliu a fost aplicat
corect • Latime: 9.5 mm • Lungime: 215 mm

MARCAJE

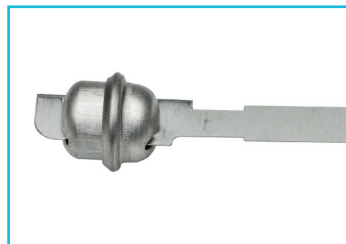
Marcare prin embosare Text • Serie

CULORI

• Metal

AMBALARE

1000 piese/cutie •
Dimensiuni: 395 x 290 x 200 mm •
Greutate: 8.5 kg



TSC1



APLICAȚII

• Containere • Incinte • Camioane •
Rezervoare • Vagoane

MATERIAL

• Corp 100% otel, lustruit • Sistem de in-
chidere pe iala • Incuietoarea interna din
cupru protejat la rugina si eroziune.

CARACTERISTICI

• Format din doua corpuri cu incuietoare,
incuietori si chei • Trei chei pe incuietoare
• Dimensiuni: Lungime 40mm, Grosime
8mm • Diferite guri de inchidere, pentru
a acomoda diferentele de spatii intre
tuburile usilor • Forta de rupere: peste 3,5
tone.

MARCAJE

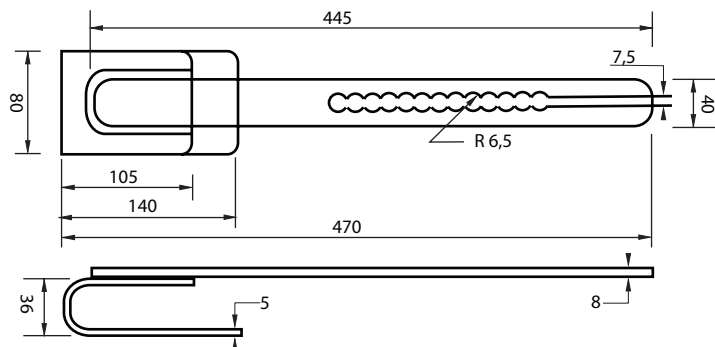
• Logo • Text • Serie

CULORI

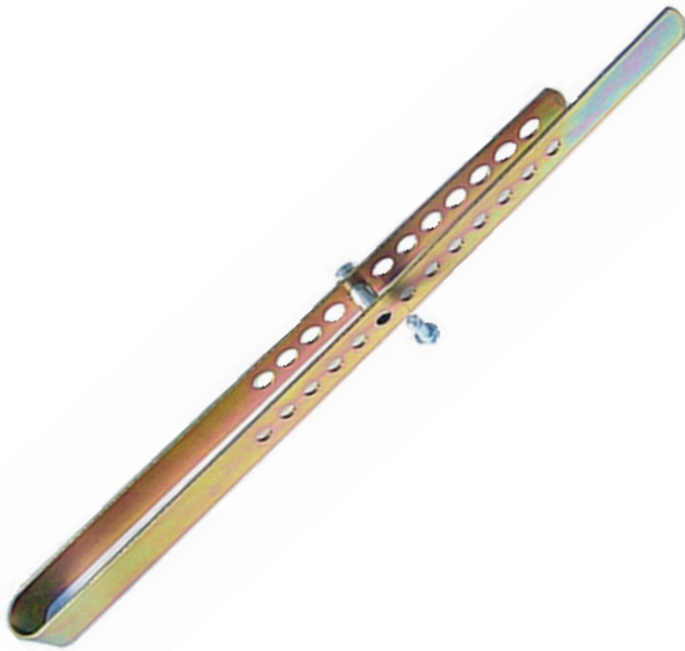
• Metal

AMBALARE

• 5 piese/cutie •
Dimensiuni: 495 x 470 x 130mm •
Greutate: 16 kg



TSC2



APLICAȚII

- Containere • Incinte • Camioane • Rezervoare • Vagoane

MATERIAL

- Corp 100% otel, lustruit • Bulon din otel galvanizat cu continut scazut de carbon.

CARACTERISTICI

- Dimensiuni: Lungime 35mm, Grosime 2,5mm • Diferite guri de inchidere, pentru a acomoda diferentele de spatii intre tuburile usilor • Forta de rupere: peste 3 tone.

MARCAJE

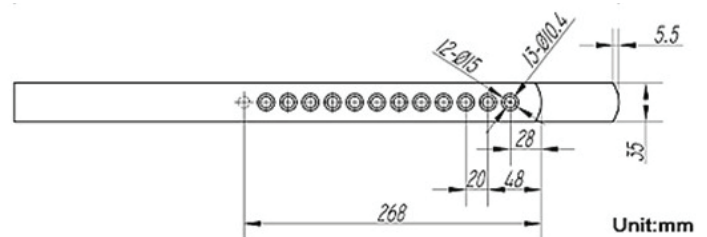
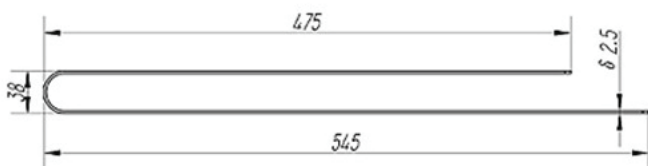
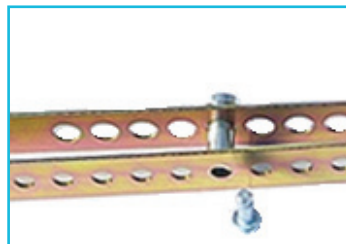
- Logo • Text • Serie

CULORI

- Metal

AMBALARE

- 10 piese/cutie • Dimensiuni: 565 x 480 x 55 mm • Greutate: 19.5 kg



Unit:mm

TSC3



APLICAȚII

- Containere • Incinte • Camioane • Rezervoare • Vagoane

MATERIAL

- Corp 100% otel, lustruit • Bulon din otel galvanizat cu continut scazut de carbon.

CARACTERISTICI

- Dimensiuni: Lungime 35mm, Grosime 2,5mm • Diferite guri de inchidere, pentru a acomoda diferentele de spatii intre tuburile usilor • Forta de rupere: peste 3 tone

MARCAJE

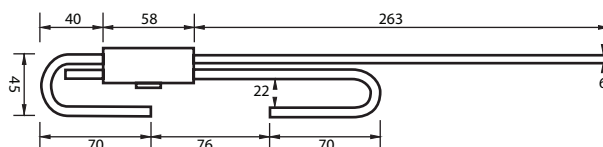
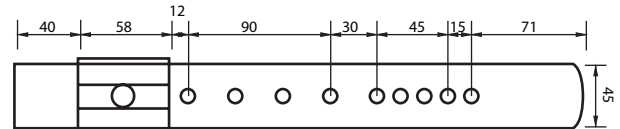
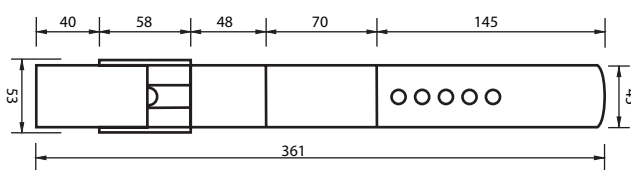
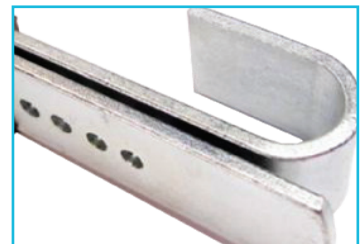
- Logo • Text • Serie

CULORI

- Metal

AMBALARE

- 10 piese/cutie • Dimensiuni: 565 x 480 x 55mm • Greutate: 19.5 kg



X SEAL



APLICAȚII

• Cisterne • Utilitati • Camioane •
Posta si curierat • Vagoane • Transport
aerian

MATERIAL

• Polipropilena • Sistem de inchidere din
otel

CARACTERISTICI

• Sigiliu indicativ autoblocant • Inchidere
reglabila (tip lat) • Eticheta scurta A: 30
mm • Eticheta lunga B: 50 mm • Lungime
operationala: L1: 200 mm • L2: 300 mm
• Lungime totala A: L1: 230 mm • L2: 330
mm • Lungime totala B: L1: 250 mm •
L2: 350 mm • Autoblocant.

MARCAJE

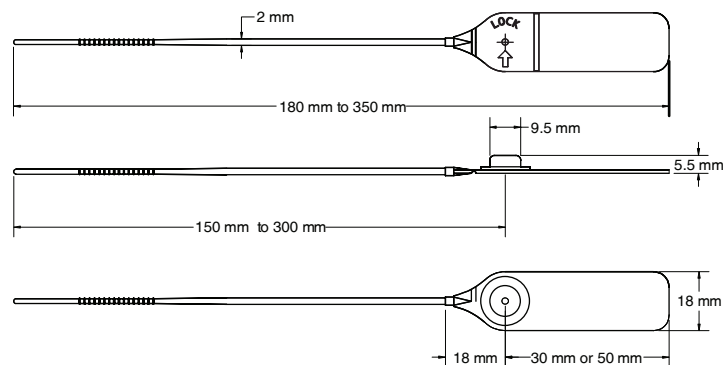
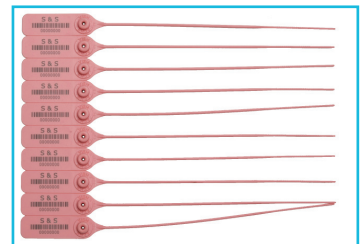
• Logo • Text • Serie • Cod de bare

CULORI

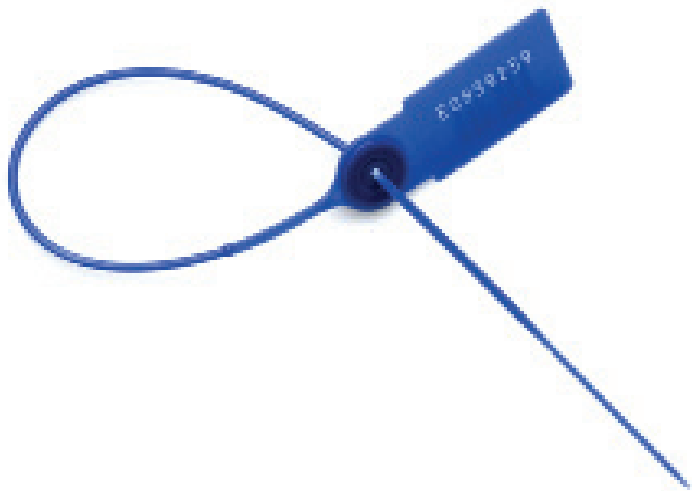
• Albastru • Alb • Galben • Rosu • Verde •
Portocaliu

AMBALARE

• 1000 bucati/ cutie



SKY SEAL



APLICAȚII

- Cisterne • Bancomate • Posta și curierat
- Vagoane

MATERIAL

- Polipropilena •
- Sistem de închidere din oțel

CARACTERISTICI

- Sistem de blocare din oțel pentru protecție sporită • Lungime operațională: între 150mm și 300 mm • Forța de rupere medie necesară: 11kg • Autoblocant.

MARCAJE

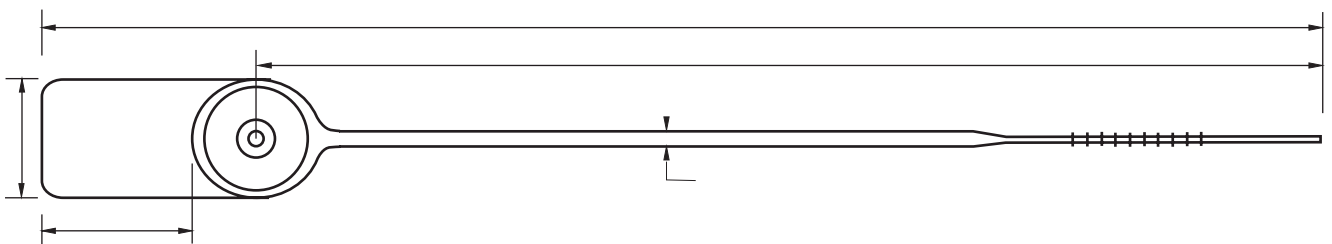
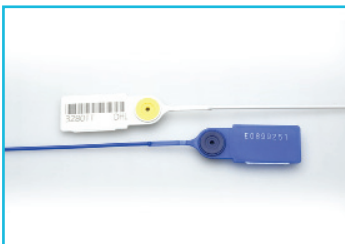
- Logo • Text • Serie • Cod de bare

CULORI

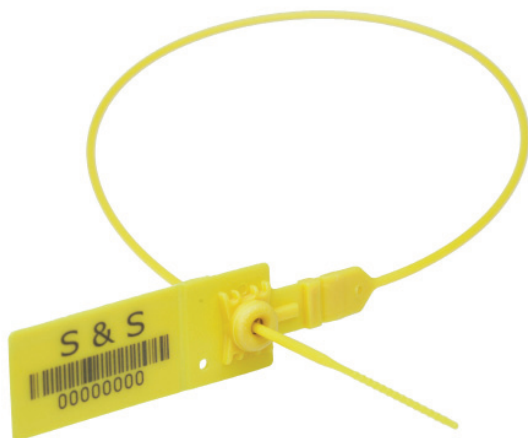
- Albastru • Alb

AMBALARE

- 1000 bucati/cutie •
- Dimensiuni: între 225 x 213 x 216 mm și 385 x 245 x 245 mm •
- Greutate: între 2.2 și 3.1 kg



TRUCKSEAL M/L



APLICAȚII

• Posta • Curierat • Aparate de control •
Containere • Vagoane • Camioane

MATERIAL

• Polietilena HD •
Sistem de inchidere din metal

CARACTERISTICI

• Sigiliu indicativ • Autoblocant • Desigilare
prin rupere/ taiere • Inchidere reglabila
(tip lat)

MARCAJE

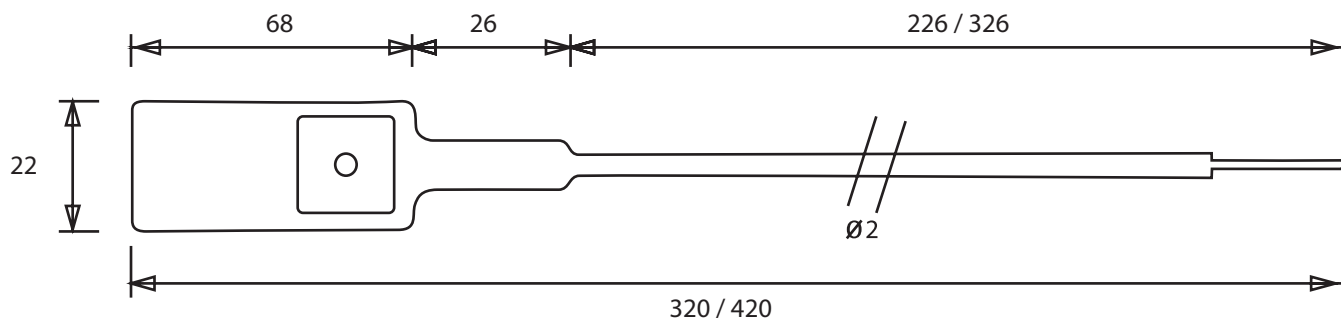
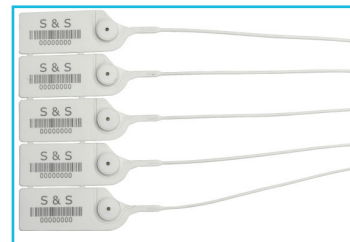
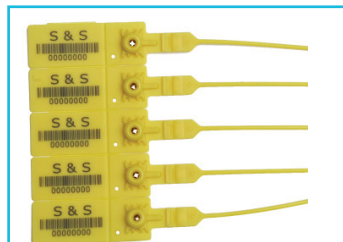
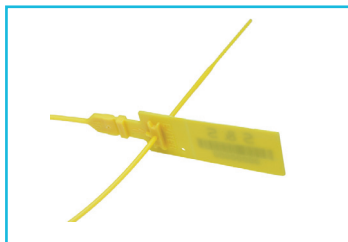
• Text • Logo • Cod de bare

CULORI

• Alb • Albastru • Galben

AMBALARE

• 1000 bucati/cutie •
Dimensiuni: 360 x 490 x 320 mm •
Greutate: 2.5 kg



ALPHA SEAL



APLICAȚII

- Cisterne • Transporturi aeriene și de valori • Camioane • Posta și curierat • Vagoane

MATERIAL

- Polipropilena • Sistem de închidere din acetal

CARACTERISTICI

- Sigiliu indicativ • Autoblocant • Zona de marcare mare • 2 materiale de construcție pentru rezistența la violare termică • Închidere reglabilă (tip lat)

MARCAJE

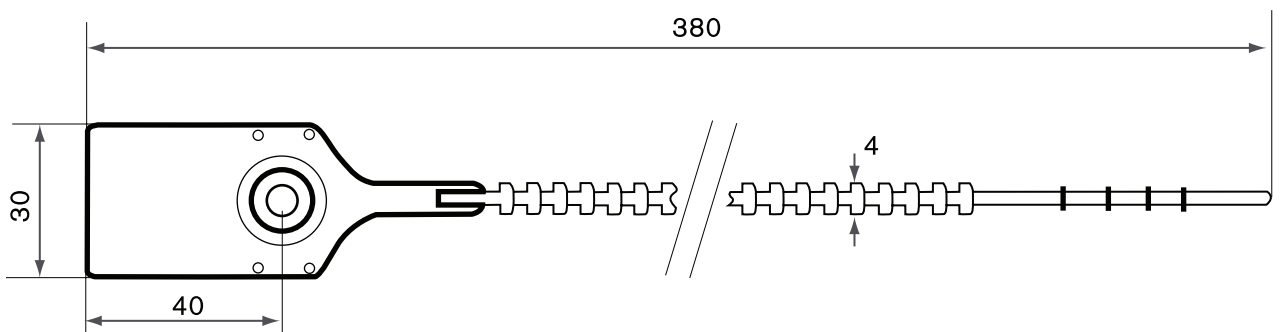
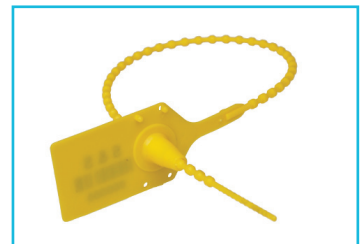
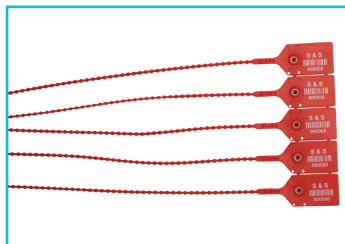
- Logo • Text • Serie • Cod de bare

CULORI

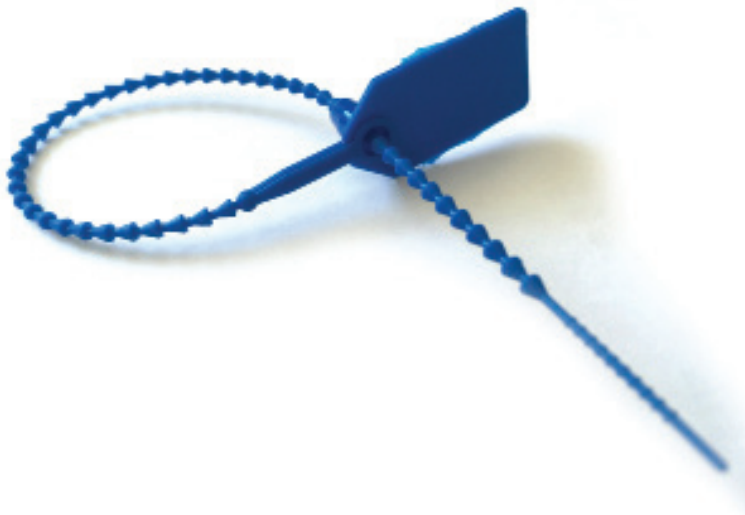
- Albastru • Alb • Galben • Rosu • Verde

AMBALARE

- 1000 bucati/cutie •
Dimensiuni: 390 x 185 x 400 mm •
Greutate: 5 kg



UNICSEAL



APLICAȚII

- Cisterne • Transporturi aeriene și de valori • Camioane • Posta și curierat • Vagoane

MATERIAL

- Polipropilena • Sistem de închidere din acetal

CARACTERISTICI

- Sigiliu indicativ • Autoblocant • Zona de marcare mare • 2 materiale de construcție pentru rezistența la violare termică • Închidere reglabilă (tip lat)

MARCAJE

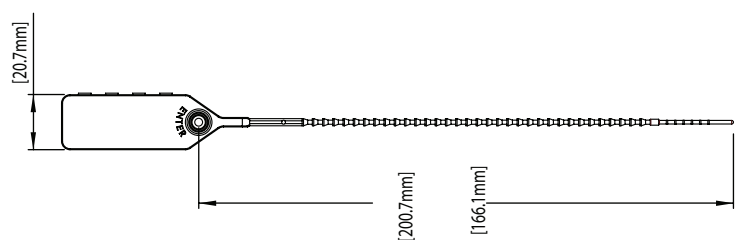
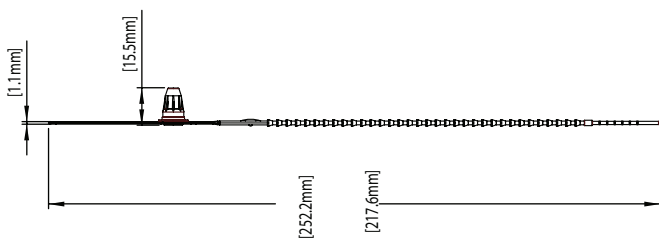
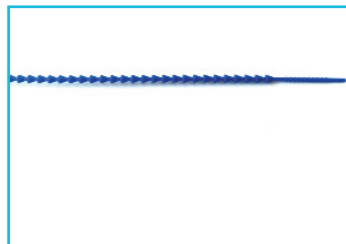
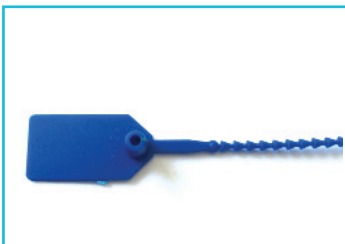
- Text • Serie • Cod de bare (doar la varianta de marcare laser)

CULORI

- Albastru • Alb • Galben • Rosu • Verde

AMBALARE

- 1000 bucati/cutie • Dimensiuni: 390 x 185 x 400mm • Greutate: 5 kg



SMALL SEAL



APLICAȚII

• Cisterne • Transport aerian și valori • Camioane • Posta și curierat • Vagoane

MATERIAL

• Polipropilena • Sistem de închidere din acetal

CARACTERISTICI

• Sigiliu indicativ • Autoblocant • Blocare în 4 puncte • Închidere reglabilă (tip lat) • Desigilare prin tăiere/ rupere

MARCAJE

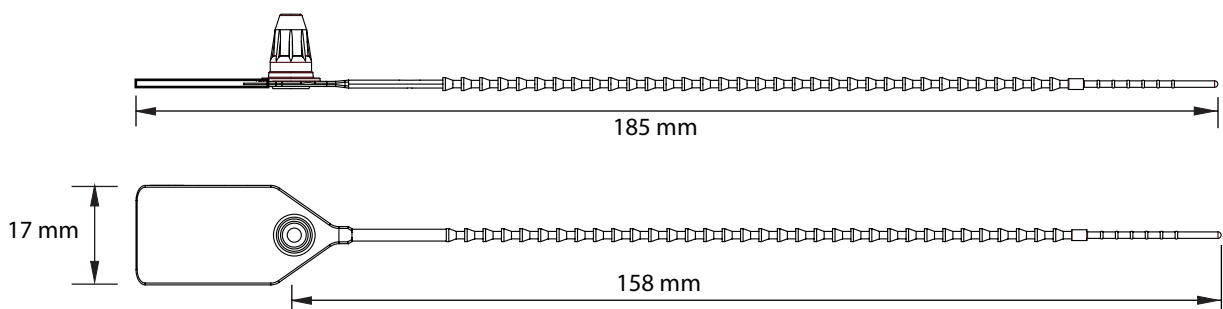
• Logo • Text • Serie • Cod de bare

CULORI

• Albastru • Galben • Rosu • Verde • Portocaliu

AMBALARE

• 1000 bucăți/cutie •
Dimensiuni: 390 x 185 x 400 mm •
Greutate: 3 kg



POSIGRIP S/L



APLICAȚII

- Cisterne • Transport aerian si valori • Camioane • Posta si curierat

MATERIAL

- Polipropilena • Sistem de inchidere metalic

CARACTERISTICI

- Sigiliu de plastic cu sistem de inchidere metalic capsulat prin sudura ultrasonica • Autoblocant • Inchidere reglabila (tip lat) • Zona de marcare mare

MARCAJE

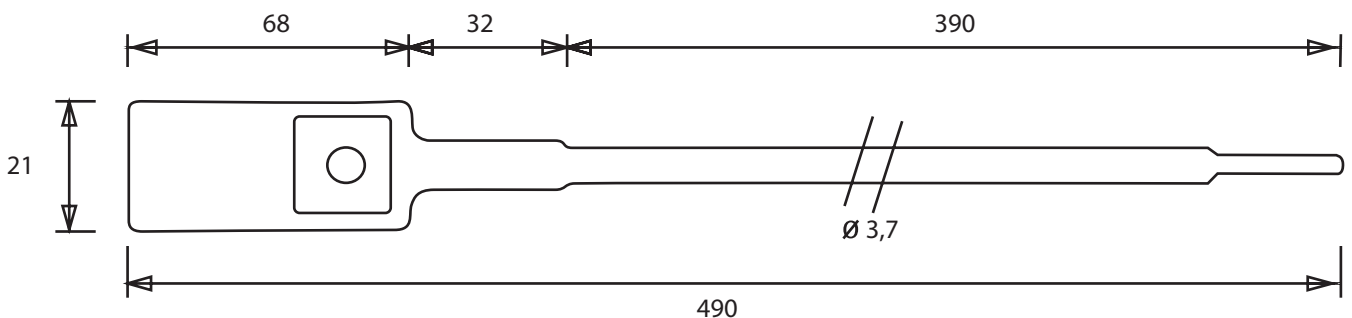
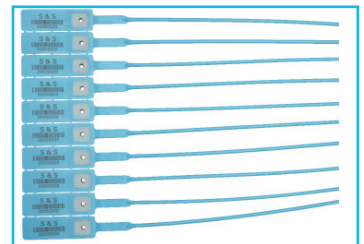
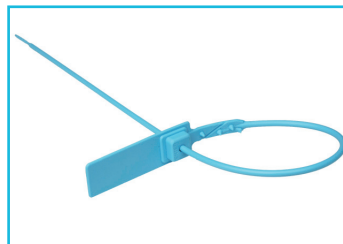
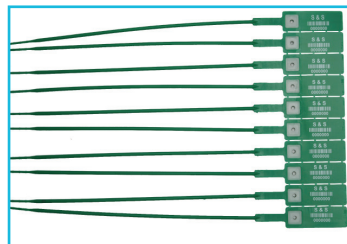
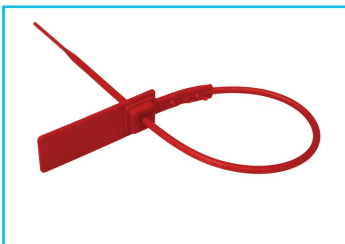
- Logo • Text • Serie • Cod de bare

CULORI

- Albastru • Alb • Galben • Rosu • Verde

AMBALARE

- 1000 bucati/cutie • Dimensiuni: 390 x 500 x 220mm • Greutate: 5 kg



BANK SEAL



APLICAȚII

• Cisterne • Transport aerian și valori • Camioane • Posta și curierat • Vagoane

MATERIAL

• Polipropilena • Sistem de închidere metalic

CARACTERISTICI

• Sigiliu de plastic cu sistem de închidere metalic • Autoblocant • Închidere reglabilă (tip lat) • Zona de marcare mare

MARCAJE

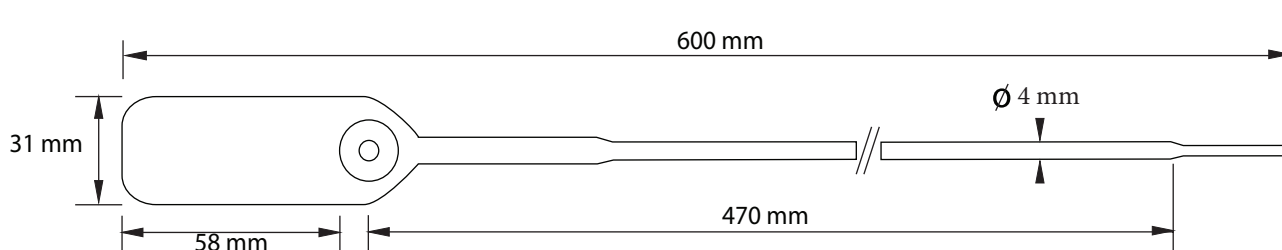
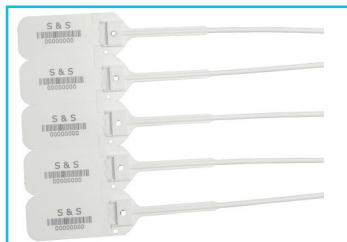
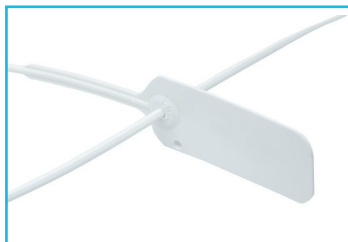
• Logo • Text • Serie • Cod de bare

CULORI

• Alb

AMBALARE

• 1000 bucati/cutie •
Dimensiuni: 390 x 500 x 220 mm •
Greutate: 5 kg



WIDSEAL TR



APLICAȚII

• Posta • Curierat • Aparate de control •
Containere • Vagoane • Camioane

MATERIAL

• Polipropilena • Sistem de închidere
metalic

CARACTERISTICI

• Sigiliu indicativ • Autoblocant • Inchidere
reglabila (tip lat) • Sistem de închidere
capsulat prin sudura ultrasonica •
Desigilare prin taiere/ rupere

MARCAJE

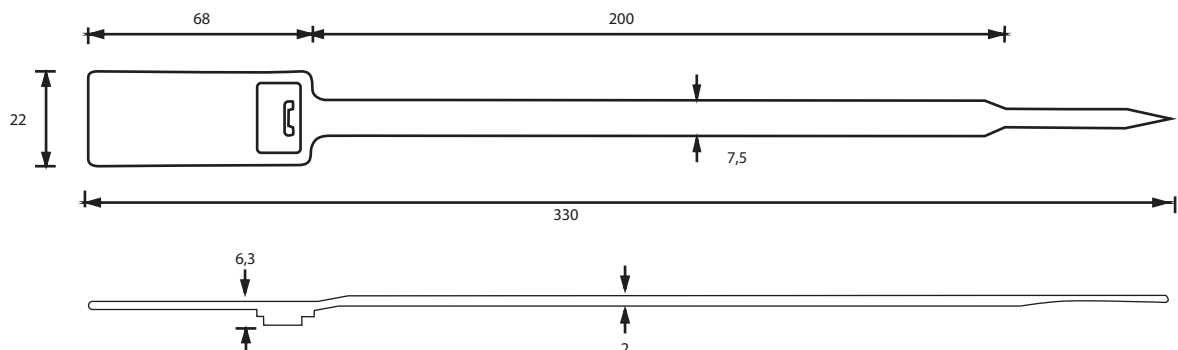
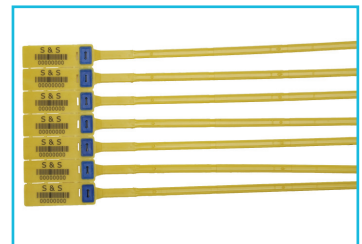
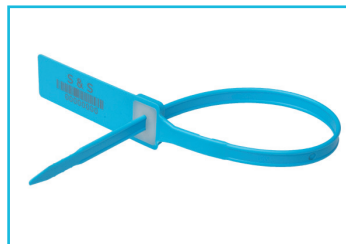
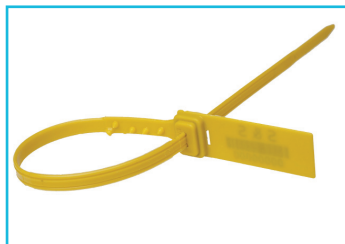
• Text • Serie • Logo • Cod de bare (la
cerere)

CULORI

• Albastru • Alb • Galben • Rosu • Mov •
Negru • Portocaliu

AMBALARE

• 1000 bucati/cutie • Dimensiuni:
- L1: 360 x 490 x 320 mm | Greutate: 7.6 kg
- L1: 330 x 430 x 290 mm | Greutate: 6 kg



WIDSEAL CH



APLICAȚII

• Posta • Curierat • Aparate de control •
Containere • Vagoane • Camioane

MATERIAL

• Polipropilena HD • Sistem de închidere
cu pastila din otel.

CARACTERISTICI

• Sigiliu indicativ • Autoblocant • Închidere
reglabila (tip lat) • Sistem de închidere
capsulat prin sudura ultrasonica •
Desigilare prin taiere/ rupere

MARCAJE

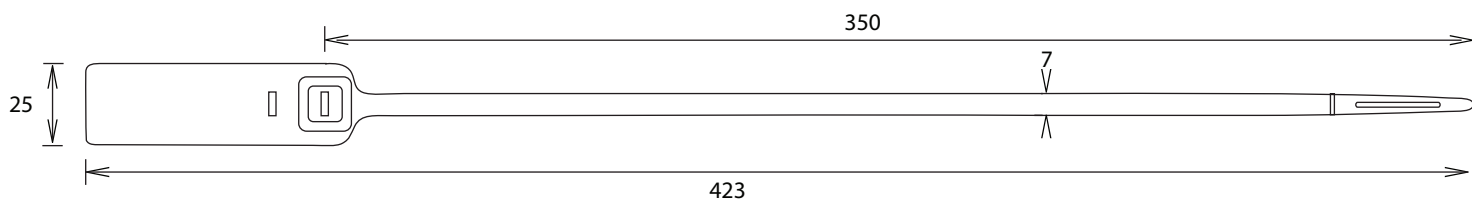
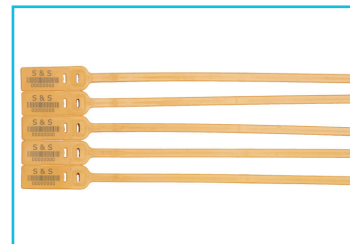
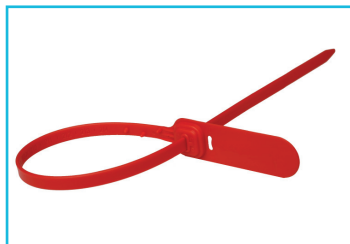
• Logo • Text • Serie • Cod de bare

CULORI

• Albastru • Alb • Galben • Rosu • Verde •
Portocaliu

AMBALARE

• 1000 bucati/cutie •
Dimensiuni: 415 x 260 x 450 mm •
Greutate: 11 kg



WIDSEAL HL



APLICAȚII

- Posta • Curierat • Aparate de control • Containere • Vagoane • Camioane

MATERIAL

- PP sau PA (nylon) • Sistem de inchidere din otel

CARACTERISTICI

- Sigiliu indicativ • Autoblocant • Element de legatura si sistem de inchidere de forma eliptica pentru securizare crescuta • Inchidere reglabila (tip lat) • Desigilare prin rupere/ taiere

MARCAJE

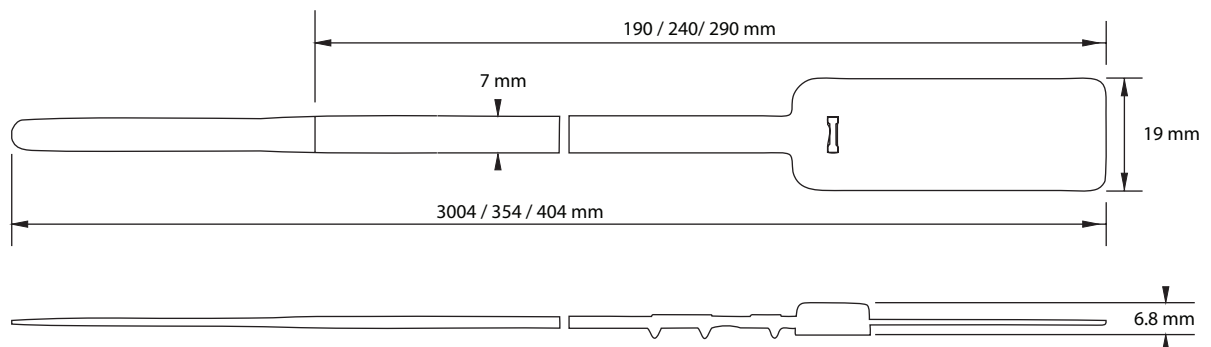
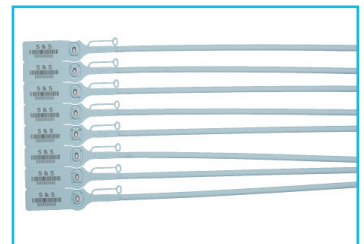
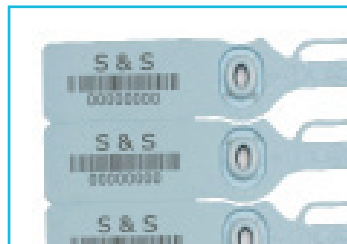
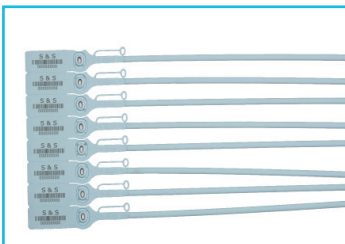
- Logo • Text • Serie • Cod de bare

CULORI

- Albastru

AMBALARE

- 1000 bucati/cutie • Dimensiuni: 415 x 260 x 450mm • Greutate: 11 kg



WIDSEAL DUO



APLICAȚII

• Posta • Curierat • Aparate de control •
Containere • Vagoane • Camioane

MATERIAL

• PP • 2 sisteme de inchidere metalice
pentru o securitate crescuta

CARACTERISTICI

• Sigiliu de securitate • Autoblocant •
Inchidere reglabila (tip lat) • Desigilare
prin taiere/ rupere

MARCAJE

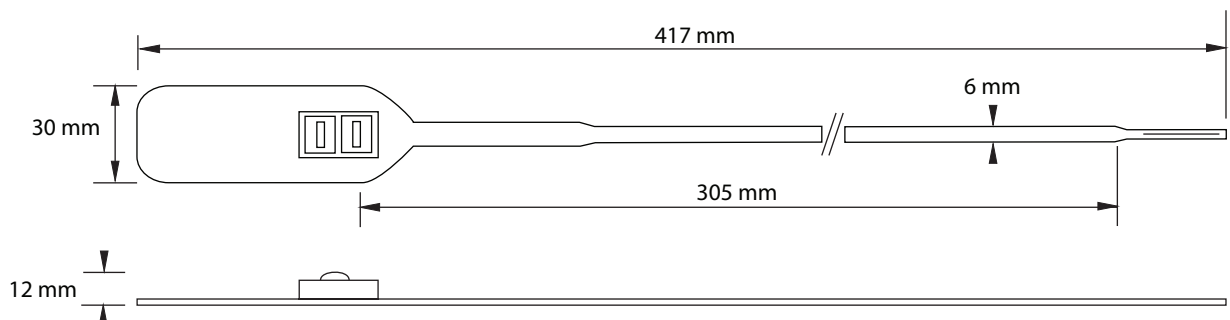
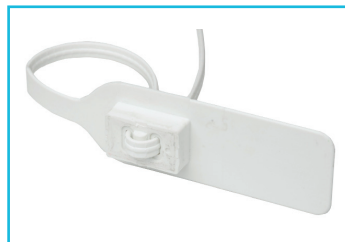
• Logo • Text • Serie • Cod de bare

CULORI

• Alb • Galben • Alte culori

AMBALARE

• 1000 bucati/cutie •
Dimensiuni: 415 x 260 x 450mm •
Greutate: 11 kg



SLICKSEAL



APLICAȚII

• Cisterne • Transporturi aeriene și de valori • Camioane • Posta și curierat • Vagoane

MATERIAL

• Polietilena HD

CARACTERISTICI

• ISO/PAS 17712 - sigiliu indicativ • Lungimea operationala: 300mm • Auto-blocant

MARCAJE

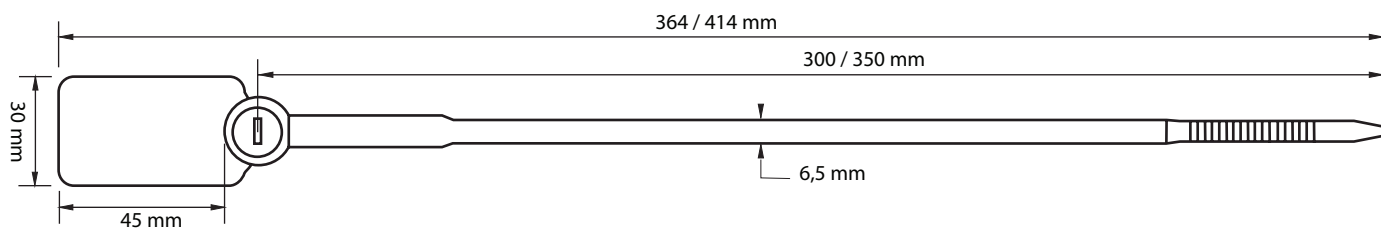
• Logo • Text (max 22 caractere) • Serie (max 9 cifre) • Cod de bare

CULORI

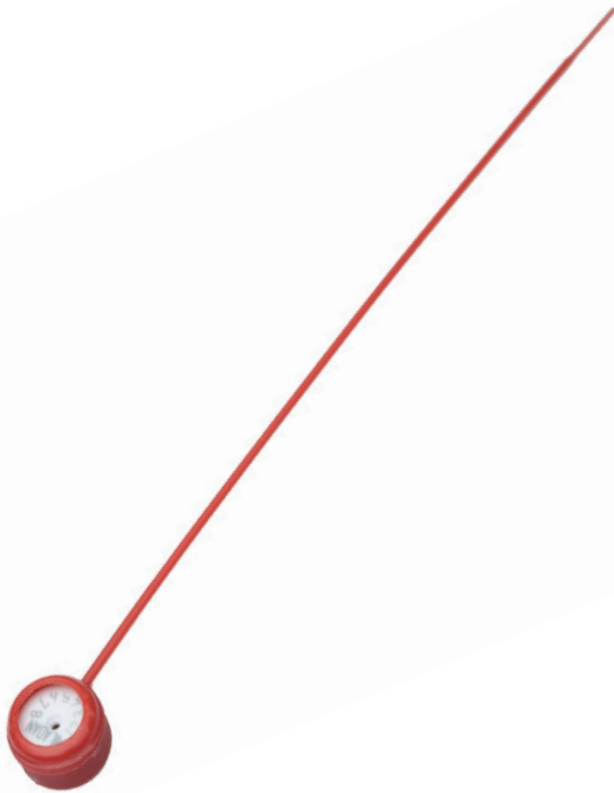
• Albastru • Alb • Galben • Rosu

AMBALARE

• 1000 bucati/cutie • Dimensiuni: 390 x 500 x 200 mm • Greutate: 3,5 kg



STINSEAL



APLICAȚII

- Probe • Incinte • Rezervoare • Recipienti
- Utilitati • Medicina • Aparate de masura si control

MATERIAL

- Polietilena HD • Sistem de inchidere metalic

CARACTERISTICI

- ISO/PAS 17712 - sigiliu indicativ • Lungimea operationala: 300mm • Auto-blocan • Sigiliu indicativ • Autoblocant • Inchidere reglabila (tip lat) • Desigilare prin taiere/ rupere

MARCAJE

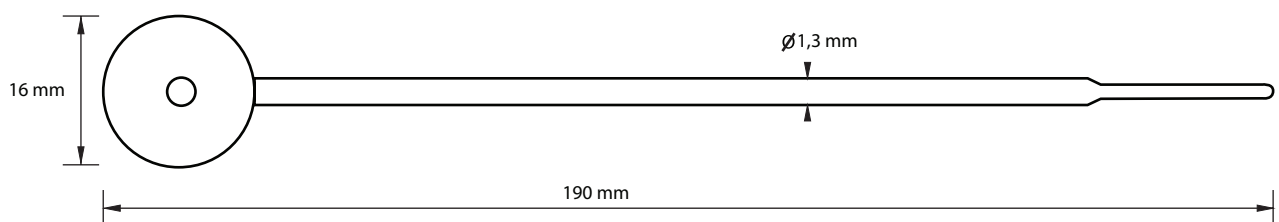
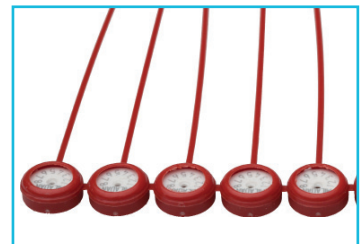
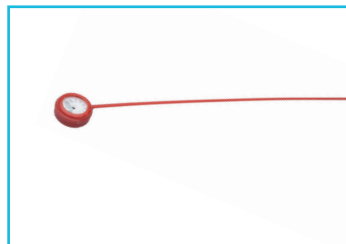
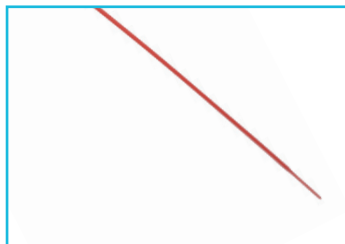
- Text • Serie

CULORI

- Albastru • Rosu

AMBALARE

- 1000 bucati/cutie • Dimensiuni: 360 x 490 x 320 mm • Greutate: 2.5kg



STINLOCK



APLICAȚII

- Probe • Incinte • Rezervoare • Recipienti
- Utilitati • Medicina • Aparate de masura si control

MATERIAL

- Polietilena HD

CARACTERISTICI

- ISO/PASS 17712 - sigiliu indicativ • Lungime operationala: 75 mm • Desigilare prin taiere • Autoblocant

MARCAJE

- Logo • Text • Serie • Cod de bare

CULORI

- Alb • Negru

AMBALARE

- 1000 bucati/ cutie • Dimensiuni: 440 x 200 x 450 mm • Greutate: 5.5 kg



WINGSEAL



APLICAȚII

• Posta • Curierat • Transport aerian și de valori • Containere • Vagoane • Camioane

MATERIAL

• PP sau PA (nylon) • Sistem de închidere cu pastila din acetal

CARACTERISTICI

• Sigiliu indicativ • Autoblocant • Inchiidere reglabila (tip lat) • Desigilare prin taiere/ rupere

MARCAJE

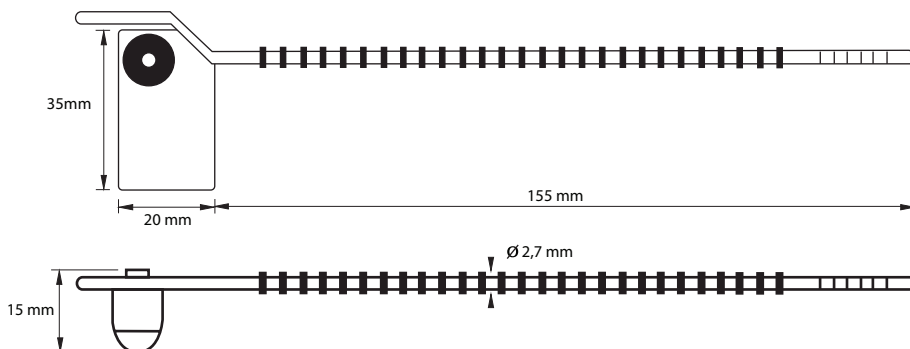
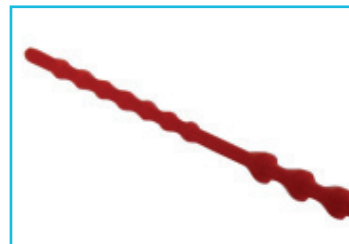
• Logo • Text • Serie

CULORI

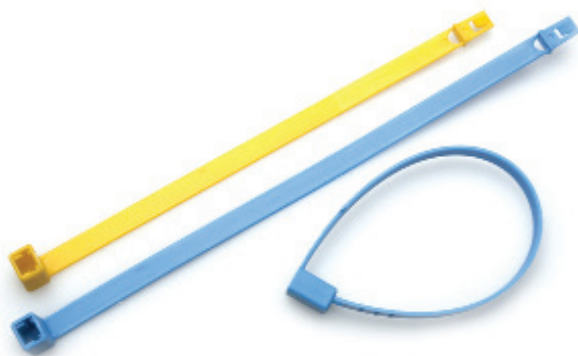
• Alb • Rosu • Galben

AMBALARE

• 1000 bucati/cutie •
Dimensiuni: 390 x 500 x 220mm •
Greutate: 2.5 kg



RINGSEAL



APLICAȚII

• Cisterne • Utilitati • Camioane • Posta si curierat • Vagoane • Aparate de masura si control

MATERIAL

• Polietilena HD

CARACTERISTICI

• Lungime: 207mm | Latime: 10mm | Grosime: 1mm • Zona de marcare mare: 207 x 8 mm • Element de legatura ingust (5 mm) ce permite utilizarea la sisteme de inchidere auto • Inchidere fixa

MARCAJE

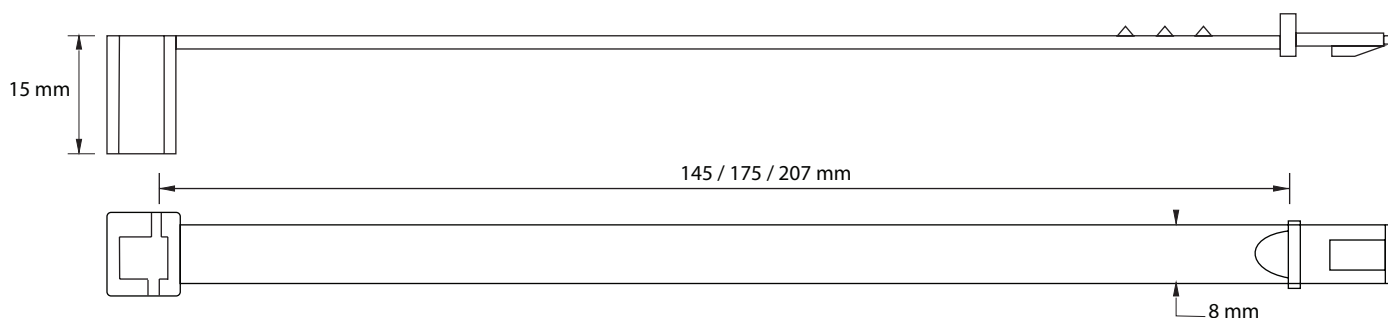
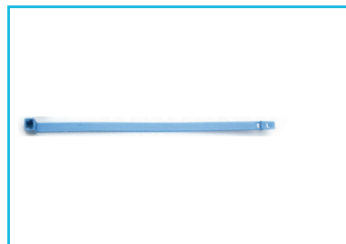
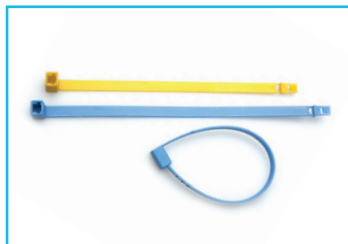
• Text (max 22 caractere) • Serie (max 9 cifre) • Cod de bare

CULORI

• Albastru • Alb • Galben

AMBALARE

• 1000 bucati/cutie



RINGSEAL DUO



APLICAȚII

- Incinte • Rezervoare • Recipienti • Utilitati
- Medicina • Aparate de masura si control

MATERIAL

- PLastic ABS

CARACTERISTICI

- ISO/PASS 17712 - sigiliu indicativ • Rezistența la traciune > 10 kg • Desigilare prin taiere • Autoblocant

MARCAJE

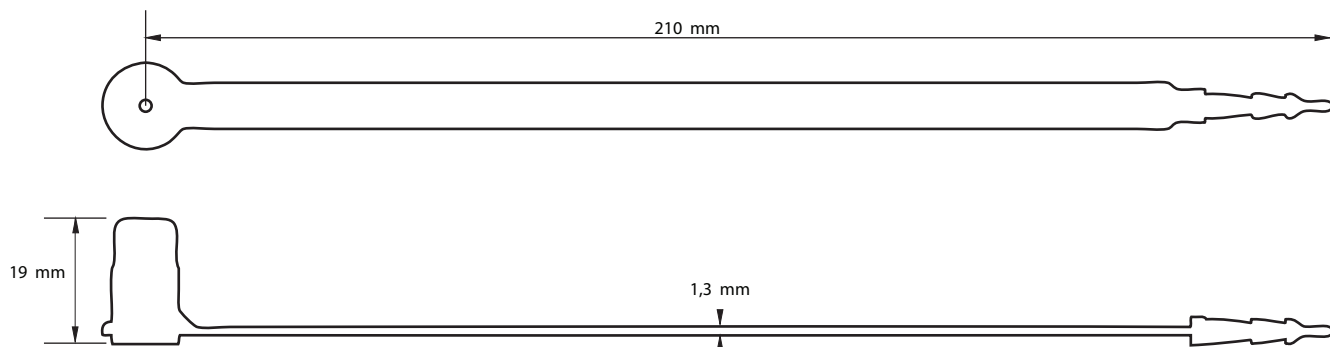
- Text • Serie • Logo • Cod de bare (optional)

CULORI

- Alb • Galben • Alte culori

AMBALARE

- 2000 bucati/cutie •
- Dimensiuni: 325 x 290 x 340 mm •
- Greutate: 6.5 kg



WIDESEAL FIX



APLICAȚII

- Containere • Vagoane • Camioane • Cisterne • Aparate de masurasi control • Posta si curierat

MATERIAL

- Polipropilena HD

CARACTERISTICI

- Lungime: 207mm | Latime: 10mm | Grosime: 1mm • Zona de marcare mare: 207 x 8 mm • Element de legatura ingust (5 mm) ce permite utilizarea la sisteme de inchidere auto • Inchidere fixa

MARCAJE

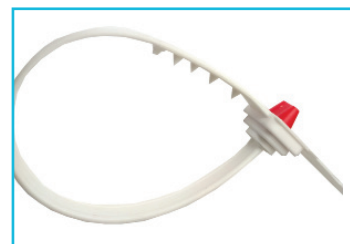
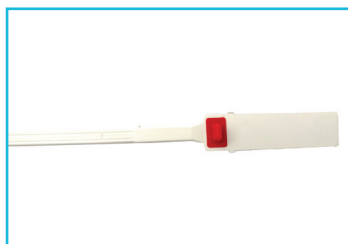
- Logo • Text (max 22 caractere) • Serie (max 9 cifre) • Cod de bare

CULORI

- Albastru • Alb • Galben

AMBALARE

- 1000 bucati/cutie



BOX SEAL



APLICAȚII

- Transport documente • Transport valori
- Posta si curierat

MATERIAL

- Polipropilena

CARACTERISTICI

- Autoblocant • Desigilare prin taiere/ rupere

MARCAJE

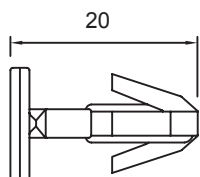
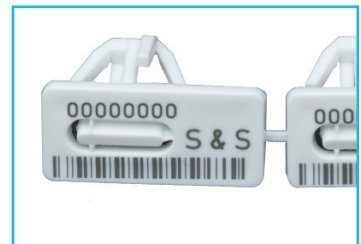
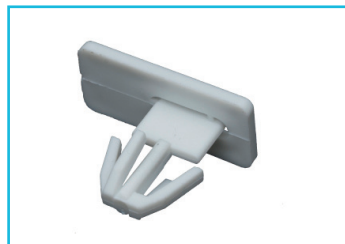
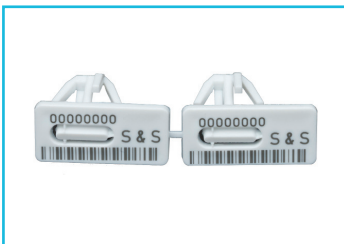
- Logo • Text • Serie • Cod de bare

CULORI

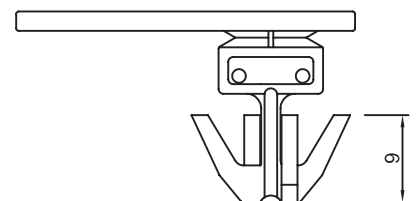
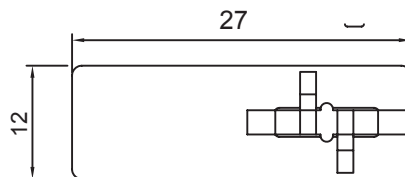
- Alb • Alte culori la cerere

AMBALARE

- 500 bucati/cutie



POLISHED
(POLISH SURFACE)
FPONT SIDE



POLYSEAL



APLICAȚII

- Pentru pungi de securitate cu sistem de închidere Polyseal sau MAXISEAL
- Posta și curierat
- Transport valori

MATERIAL

- Polipropilena

CARACTERISTICI

- Autoblocant
- Desigilare prin tăiere/ rupere

MARCAJE

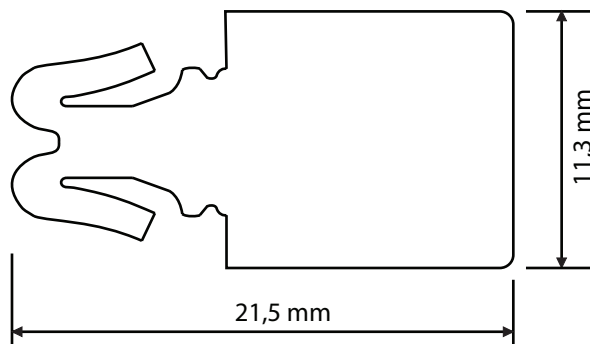
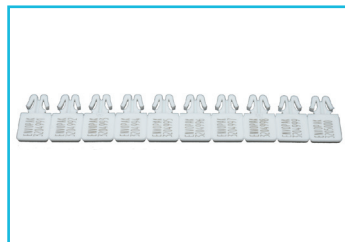
- Logo
- Text
- Serie

CULORI

- Albastru
- Alb
- Galben
- Rosu

AMBALARE

- 250 sau 1000 bucati/cutie



SAFELOCK



APLICAȚII

- Containere • Posta si curierat • Aparate de masura si control • Cisterne • Vagoane
- Camioane

MATERIAL

- Corp policarbonat (corp transparent si rotor colorat) • Otel

CARACTERISTICI

- Sigiliu de inalta siguranta • Gravati si numerotati • Cablu: 0.8 mm galvanizat moale, 0.7 mm otel plastifiat, 0.65mm otel
- Lungime standard 300 mm | Alte dimensiuni la cerere • Zona de marcare mare, cu placuta suplimentara de blocare.

MARCAJE

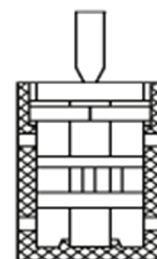
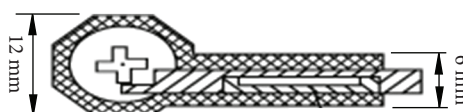
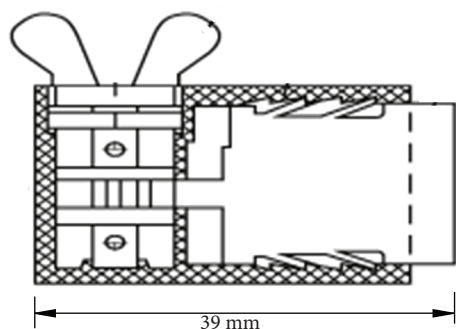
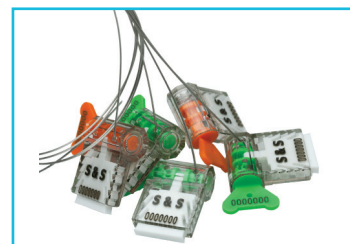
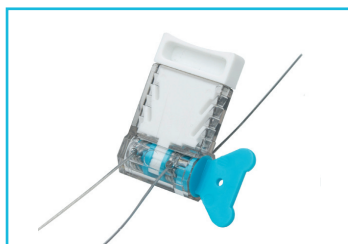
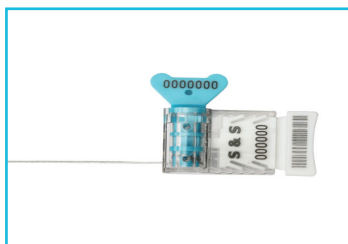
- Serie • Logo • Cod de bare (optional)

CULORI

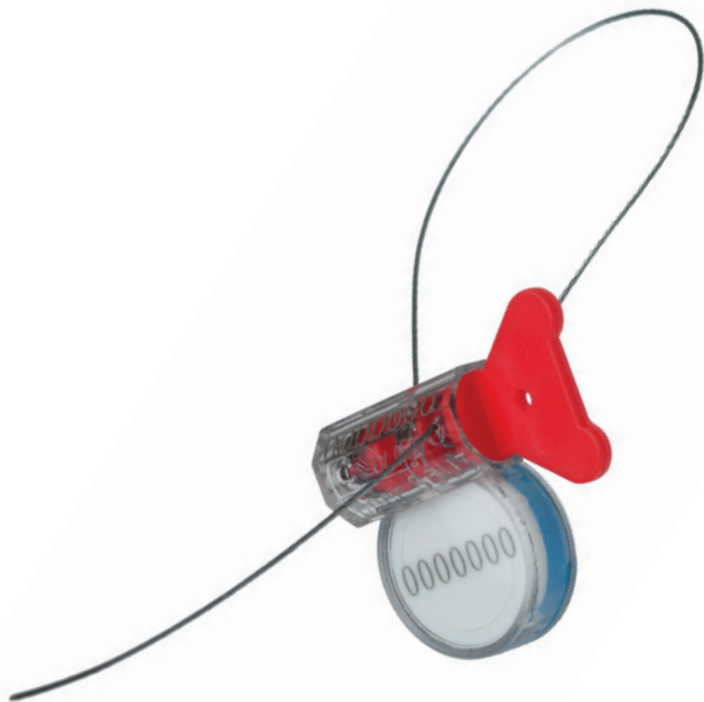
- Albastru • Alb • Galben • Rosu • Verde • Portocaliu

AMBALARE

- 1000 bucati/cutie •
- Dimensiuni: 400 x 200 x 150 mm



METERSEAL 071



APLICAȚII

- Incinte • Auto • Cutii • Cisterne • Vagoane
- Camioane • Aparate de masura si control

MATERIAL

- Corp policarbonat (corp transparent si rotor colorat) • Otel

CARACTERISTICI

- Cablu: 0.8 mm galvanizat moale, 0.7 mm otel plastifiat, 0.65 mm otel • Lungime standard 300 mm | Alte dimensiuni la cerere • Inchidere reglabila (tip lat) pentru usurinta in aplicare • Zona de marcare mare

MARCAJE

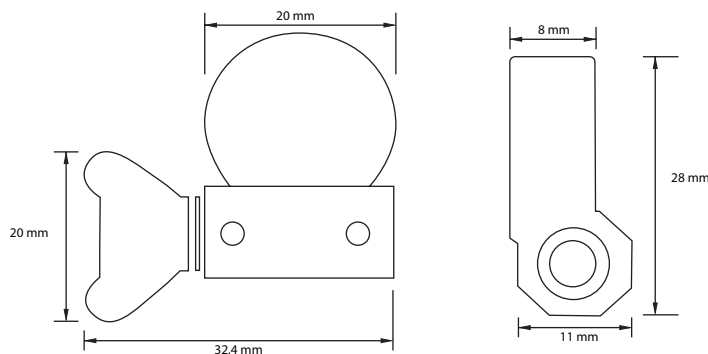
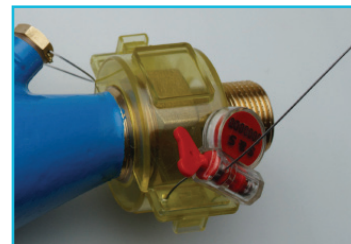
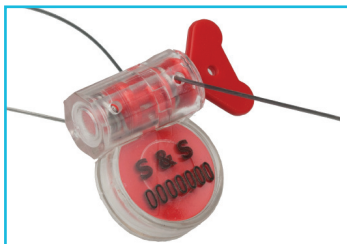
- Marcare laser • Text • Serie • Logo • Cod de bare (optional)

CULORI

- Albastru • Alb • Galben • Rosu • Verde • Portocaliu

AMBALARE

- 1000 bucati/cutie • Dimensiuni: 400 x 200 x 150 mm



METERSEAL MD



APLICAȚII

• Containere • Posta si curierat • Aparate de control • Cisterne • Vagoane • Camioane

MATERIAL

• Corp policarbonat (corp transparent si rotor colorat) • Otel

CARACTERISTICI

• Cablu: 0.8 mm galvanizat moale, 0.7 mm oțel plastifiat • Lungime standard 300 mm | Alte dimensiuni la cerere

MARCAJE

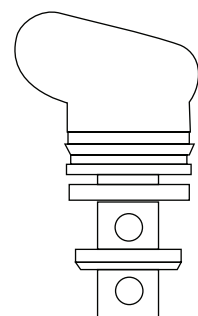
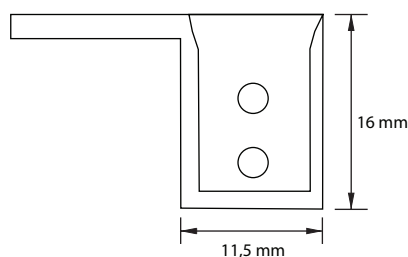
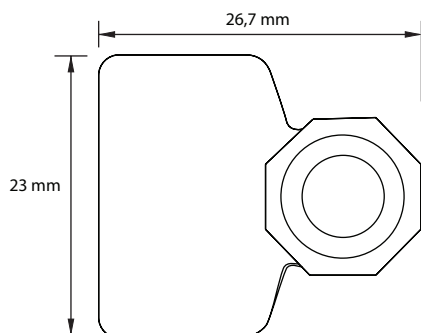
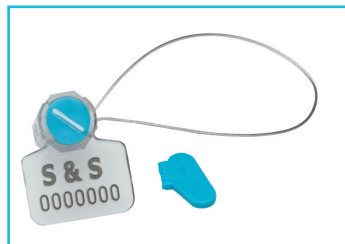
• Serie • Text

CULORI

• Albastru • Galben • Rosu • Verde

AMBALARE

• 1000 bucati/ cutie •
Dimensiuni: 400 x 200 x 150 mm



METERSEAL T 208



APLICAȚII

• Containere • Posta și curierat • Aparate de control • Cisterne • Vagoane • Camioane

MATERIAL

• Corp policarbonat (corp transparent și rotor colorat) • Oțel

CARACTERISTICI

• Cablu: 0.8 mm galvanizat moale, 0.7 mm oțel plastifiat • Lungime standard 300 mm | Alte dimensiuni la cerere • Sigiliu de plastic cu element de legatură metalic • Element de legatură subtire (0.8 mm) realizat din oțel, ce permite utilizarea la sisteme de închidere înguste • Închidere reglabila (tip lat) pentru ușurința în aplicare • Zona de marcare mare

MARCAJE

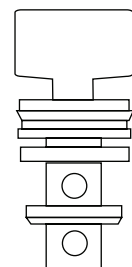
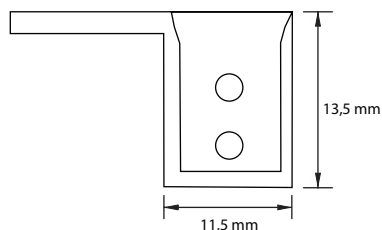
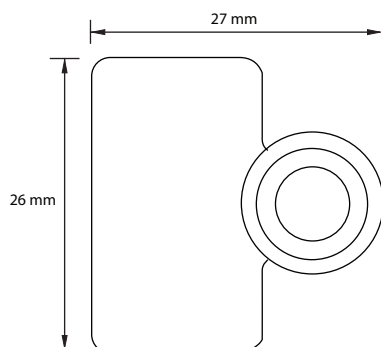
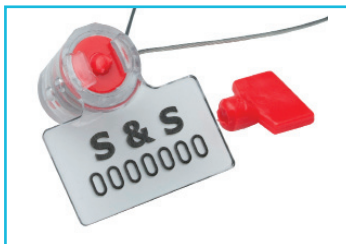
• Text • Serie

CULORI

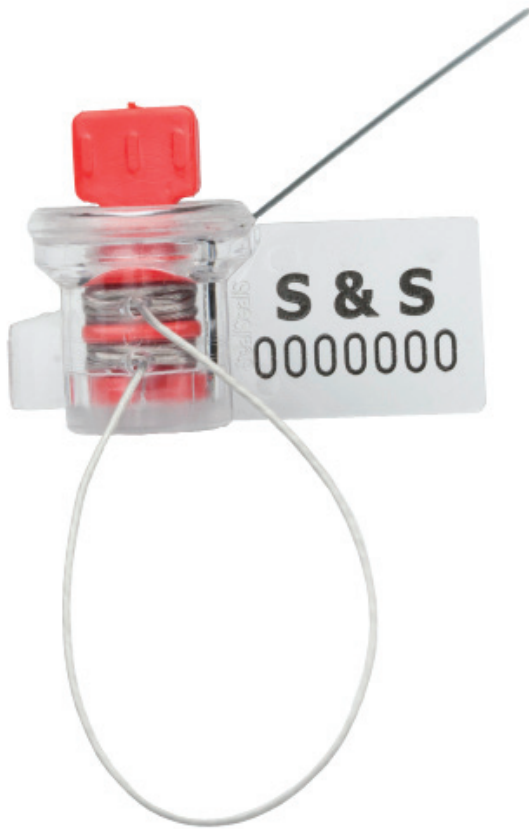
• Albastru • Galben • Rosu • Verde • Portocaliu

AMBALARE

• 1000 bucati/cutie • Dimensiuni: 400x200x150mm



METERSEAL N



APLICAȚII

• Containere • Posta si curierat • Aparate de control • Cisterne • Vagoane • Camioane

MATERIAL

• Corp policarbonat (corp transparent si rotor colorat) • Otel

CARACTERISTICI

• Cablu: 0.8 mm galvanizat moale, 0.7 mm oțel plastifiat • Lungime standard 300 mm | Alte dimensiuni la cerere

MARCAJE

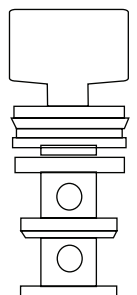
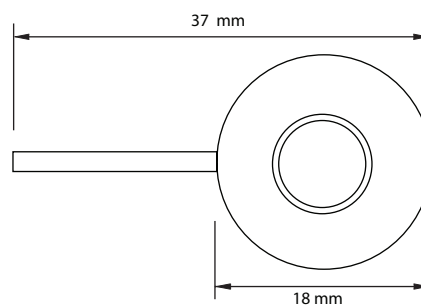
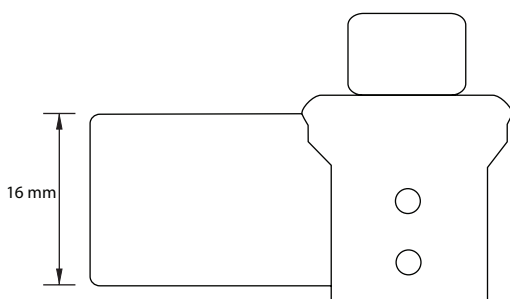
Serie • Logo

CULORI

• Albastru • Galben • Rosu • Verde

AMBALARE

• 1000 bucati/ cutie •
Dimensiuni: 400 x 200 x 150 mm



ANCHORSEAL



APLICAȚII

- Posta, pungi, pachete • Curierat •
- Contoare • Alimentatie • Cisterne •
- Vagoane • Utilitati

MATERIAL

- Policarbonat

CARACTERISTICI

- Sigiliu manual tip ANCHOR utilizat cu sarma de sigilat

MARCAJE

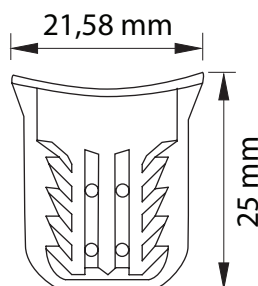
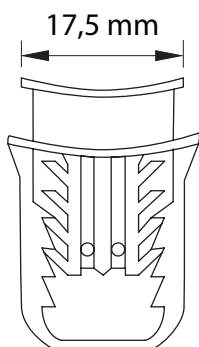
- Logo • Text • Serie

CULORI

- Albastru • Alb • Galben • Rosu • Verde •
- Portocaliu

AMBALARE

- 1000 bucati/ cutie



ANTILOCK



APLICAȚII

XXXXXXX

MATERIAL

XXXXXXX

CARACTERISTICI

XXXXXXX

MARCAJE

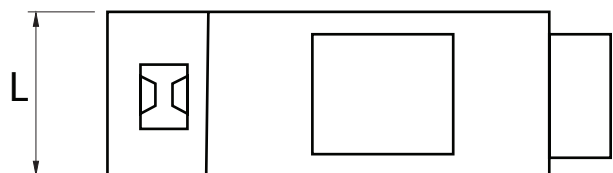
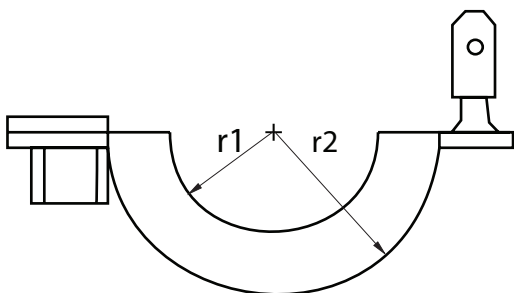
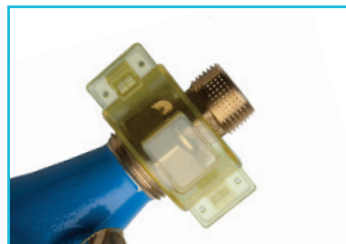
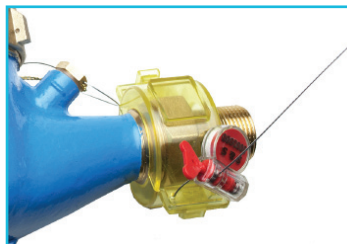
XXXXXXX

CULORI

XXXXXXX

AMBALARE

XXXXXXX



PLOMBEX



APLICAȚII

- Probe • Camioane • Transport maritim
- Incinte • Aparate de masura si control • Vagoane

MATERIAL

- PP

CARACTERISTICI

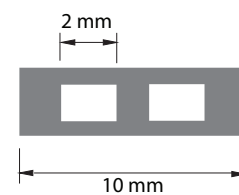
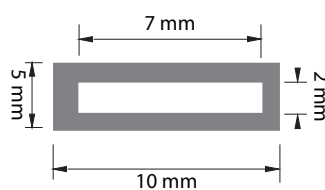
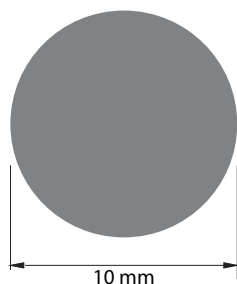
- Se utilizeaza cu sarma sau sfoara la cerere • Diametru 10 mm

CULORI

- Albastru • Alb • Galben • Gri • Rosu • Verde • Portocaliu

AMBALARE

- 1000 bucati/punga



ETICHETA PSS NO RESIDUE



APLICAȚII

- Posta • Curierat • Insiutii guvernamentale, probe • Aeronave • Laptop-uri si calculatoare • Panouri de control

MATERIAL

CARACTERISTICI

- Etichetele securizate No Residue sunt cele mai simple si eficace sigilii pentru a securiza cutiile, pachetele, calculatoarele, intrumente de masura si control, etc. • Proiectate si realizate pentru a impiedeca si pentru a evidientia orice tentativa de violare, aceste "sigilii" vor arata un mesaj clar "OPENED" pe etichete daca vor fi indepartate •

MARCAJE

- mesajul de avertizare • Mod de inseriere • Logo • Culoare

CULORI

- Albastru • Alb • Galben • Gri • Rosu • Verde • Portocaliu • Negru

AMBALARE

buc/rola



ETICHETE SECURIZATE - DUAL LAYER

APLICAȚII

• Posta • Curierat • Insititii guvernamentale, probe • Aeronave • Laptop-uri si calculatoare • Panouri de control

MATERIAL

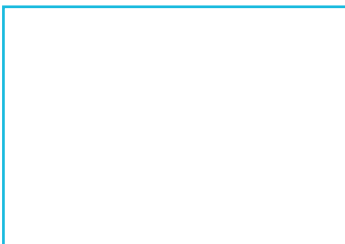
xxxxxxx

CARACTERISTICI

• Etichetele securizate Dual Layer sunt cele mai simple si eficace sigilii pentru a securiza cutiile, pachetele, usile, rezervoarele, etc. Proiectate si realizate pentru a impiedeca si pentru a evidentia orice tentativa de violare, aceste "sigilii" vor arata un mesaj clar "OPENED" atat pe eticheta cat si pe suprafata daca vor fi indepartate • Fiecare eticheta este unic in-seriata - sub suprafata etichetei - pentru a preveni inlocuirea frauduloasa (stergere, inlocuire)si pentru a permite inregistrarea intr-o baza de date.

MARCAJE CULORI

AMBALARE



ETICHETA LABELLOCK NO RESIDUE



APLICAȚII

• Posta • Curierat • Insiutii guvernamentale, probe • Aeronave • Laptop-uri si calculatoare • Panouri de control

MATERIAL

CARACTERISTICI

• Etichetele securizate No Residue sunt cele mai simple si eficace sigilii pentru a securiza cutiile, pachetele, calculatoarele, instrumente de masura si control, etc. • Proiectate si realizate pentru a impiedeca si pentru a evidientia orice tentativa de violare, aceste "sigilii" vor arata un mesaj clar "OPENED" pe etichete daca vor fi indepartate • Fiecare eticheta este unic insi inlocuirea) si pentru a permite inregistrarea intr-o baza de date.

CULORI

AMBALARE



POSTAL BAGS



APLICAȚII

- Posta • Curierat • Transport aerian și de valori • Securizare documente

MATERIAL

- Textil / poliester • Inele de închidere și securizare

CARACTERISTICI

- Sac interior: Dimensiuni 440x700 mm | Alte dimensiuni la cerere • Ignifug • Sac exterior: Dimensiuni 480x780 mm | Alte dimensiuni la cerere

MARCAJE

CULORI

AMBALARE

